



Veterans Suicide Awareness March

November 12th – November 16th, 2019

Day 1 – Tuesday, November 12th

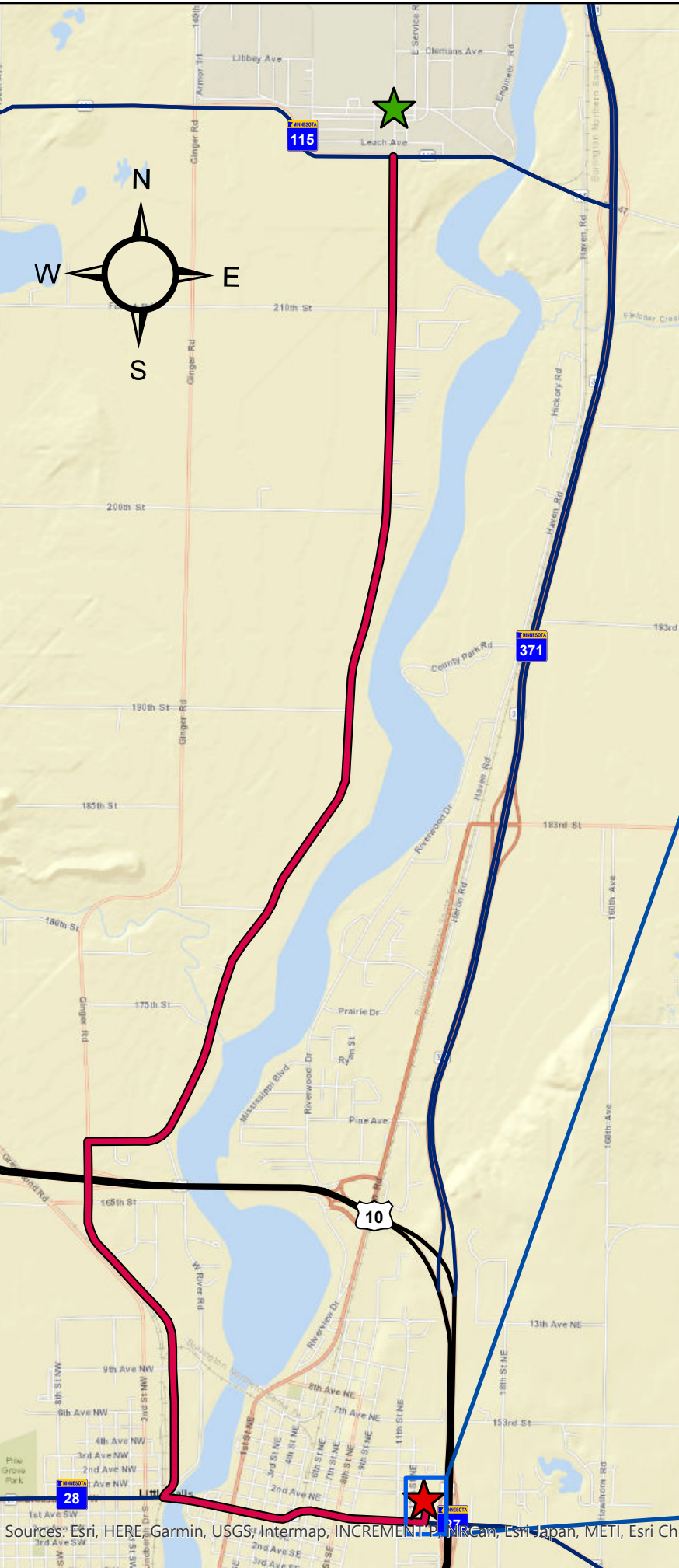
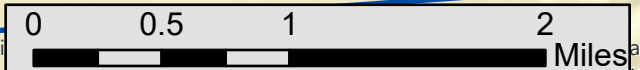
 Day One start at Camp Ripley

 Walk 13.9 miles along Great River Road (~ 3 hours)

 Day One end at VFW Post #1112 in Little Falls, MN

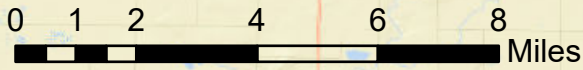


Esri, HERE, Garmin, (c) OpenStreetMap contributors, and the GIS user community



Sources: Esri, HERE, Garmin, USGS, Intermap, INCREMENT P, NRCan, Esri Japan, METI, Esri China


Map contributors, and the GIS User Community



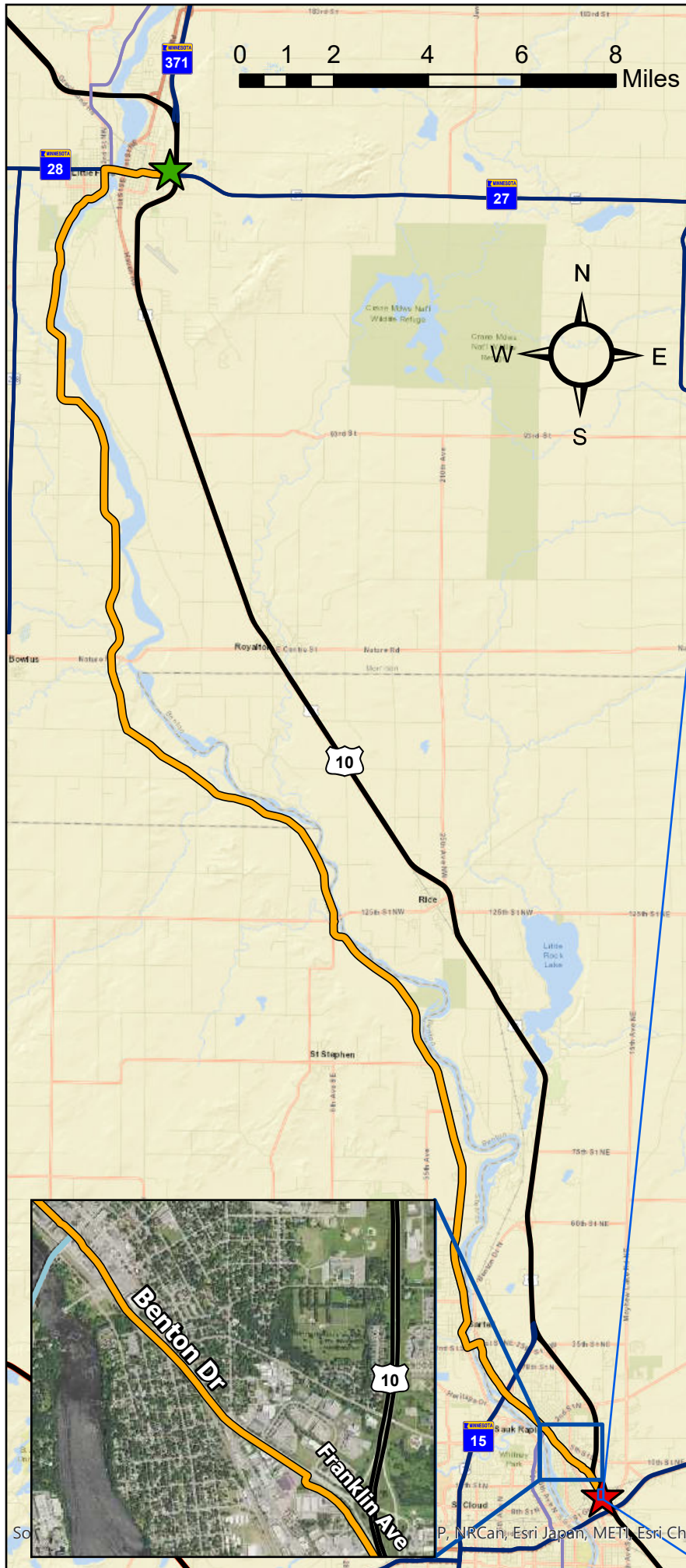
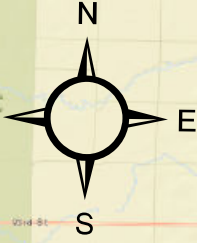
Veterans Suicide Awareness March

November 12th – November 16th, 2019
 Day 2 – Wednesday, November 13th

 **Day Two start at Little Falls VFW**

 **Walk/Drive 36.4 miles along the Great River Road into St. Cloud via Benton, then Franklin**

 **Day Two end at St. Cloud VFW POST #4847**






Veterans Suicide Awareness March

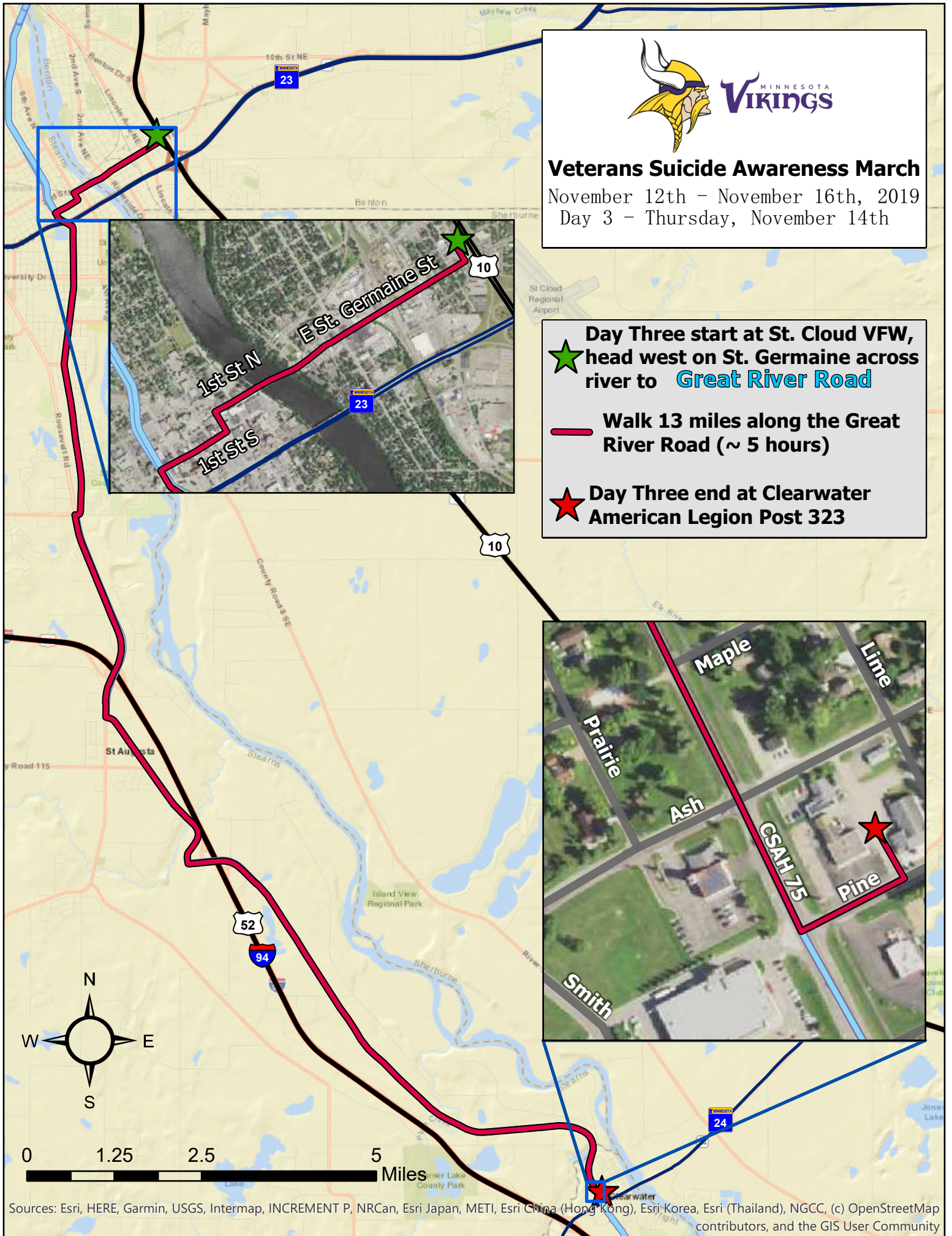
November 12th – November 16th, 2019

Day 3 – Thursday, November 14th

 **Day Three start at St. Cloud VFW, head west on St. Germaine across river to [Great River Road](#)**

 **Walk 13 miles along the Great River Road (~ 5 hours)**

 **Day Three end at Clearwater American Legion Post 323**



Sources: Esri, HERE, Garmin, USGS, Intermap, INCREMENT P, NRCan, Esri Japan, METI, Esri China (Hong Kong), Esri Korea, Esri (Thailand), NGCC, (c) OpenStreetMap contributors, and the GIS User Community



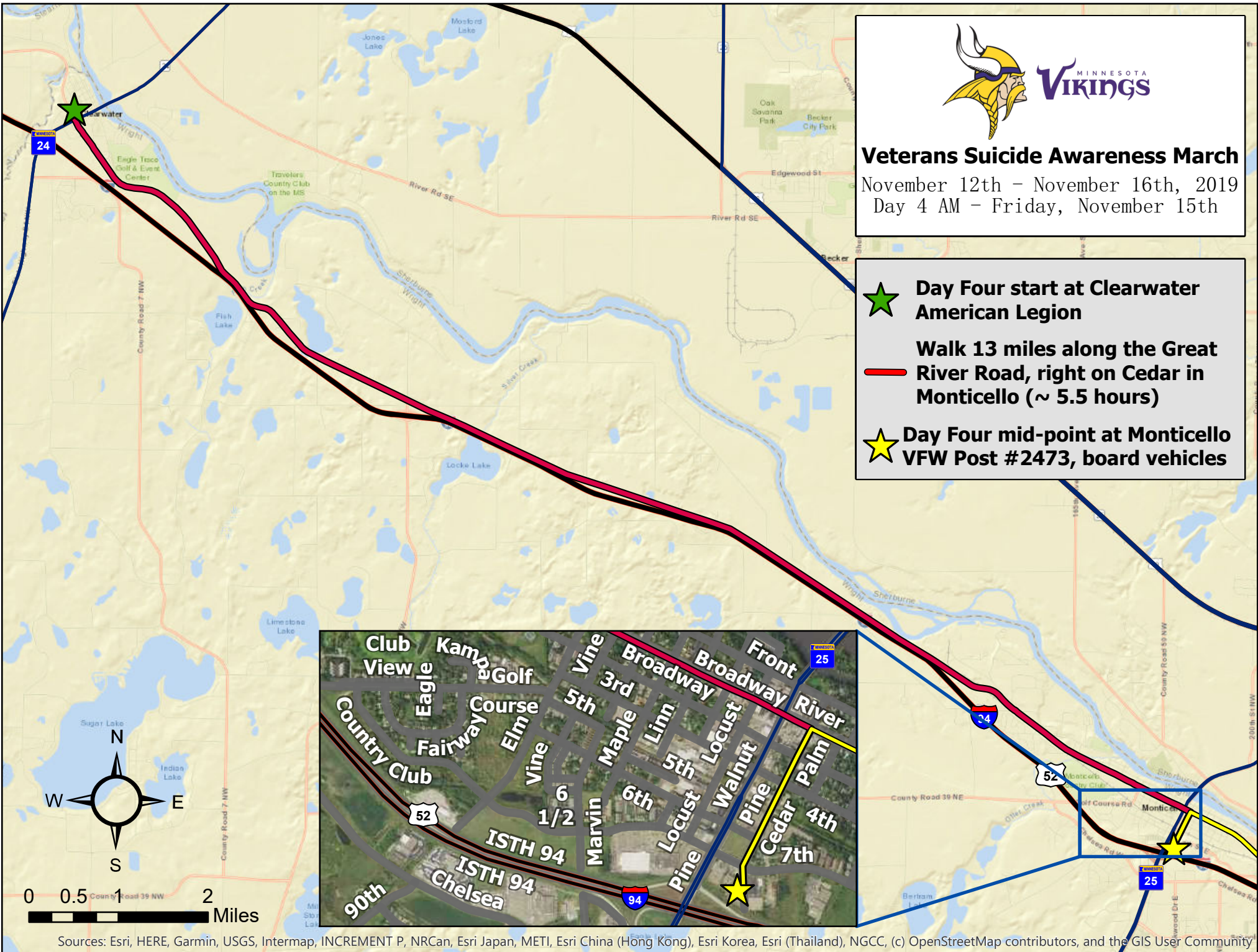
Veterans Suicide Awareness March

November 12th - November 16th, 2019
Day 4 AM - Friday, November 15th

★ Day Four start at Clearwater American Legion

Walk 13 miles along the Great River Road, right on Cedar in Monticello (~ 5.5 hours)

★ Day Four mid-point at Monticello VFW Post #2473, board vehicles






Veterans Suicide Awareness March

November 12th – November 16th, 2019

Day 5 – Saturday, November 16th

 **Day Five start at Osseo American Legion**

 **Drive to Victory Memorial Pkwy in Robbinsdale via Hwy 81 and Lake Dr (~ 14 min)**

 **Walk a final 6.1 miles of the Great River Road into Mpls, and to US Bank Stadium via Chicago Ave. (~ 2.5 hrs)**

 **Board vans at US Bank Stadium to drive to TCO Performance Center (~ 24 min)**

